

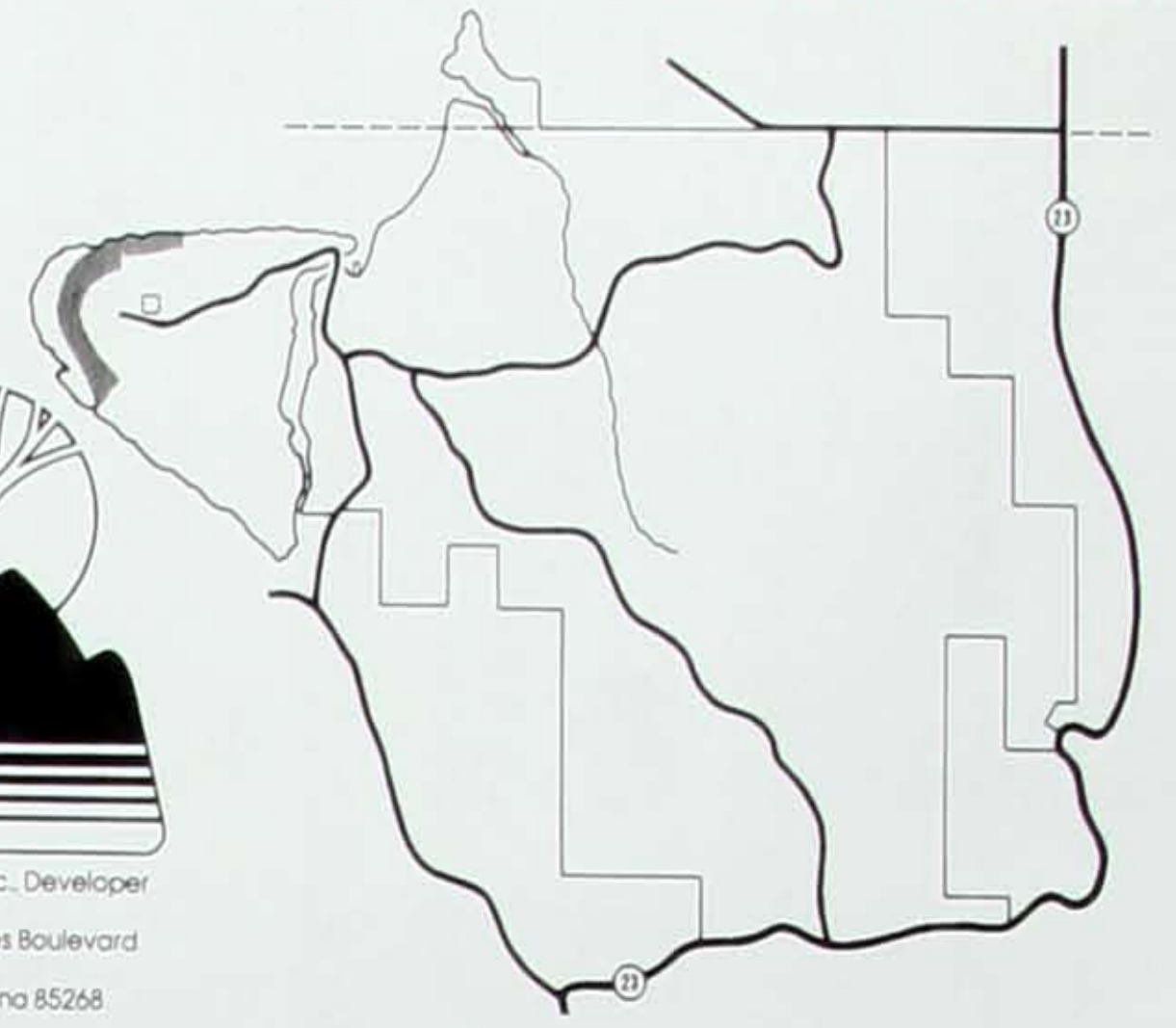
UNIT 110

Holiday Island



MCO Properties Inc., Developer

16838 East Palisades Boulevard  
P.O. Box 17795  
Fountain Hills, Arizona 85268  
(602) 837-9660



UNIT 110

ALL LOTS IN UNIT 110 ARE ZONED R-1 -- SINGLE FAMILY RESIDENTIAL.

For information concerning the construction, operation and maintenance of the improvements within this Plat, we refer you to your Federal Property Report.

NOTE: NOT A TRUE COPY OF THE RECORDED MAP. For detailed information, see plat as recorded in the Western District of Carroll County, Arkansas.

Obtain the Property Report required by Federal law and read it before signing anything. No Federal agency has judged the merits or value, if any, of the property.

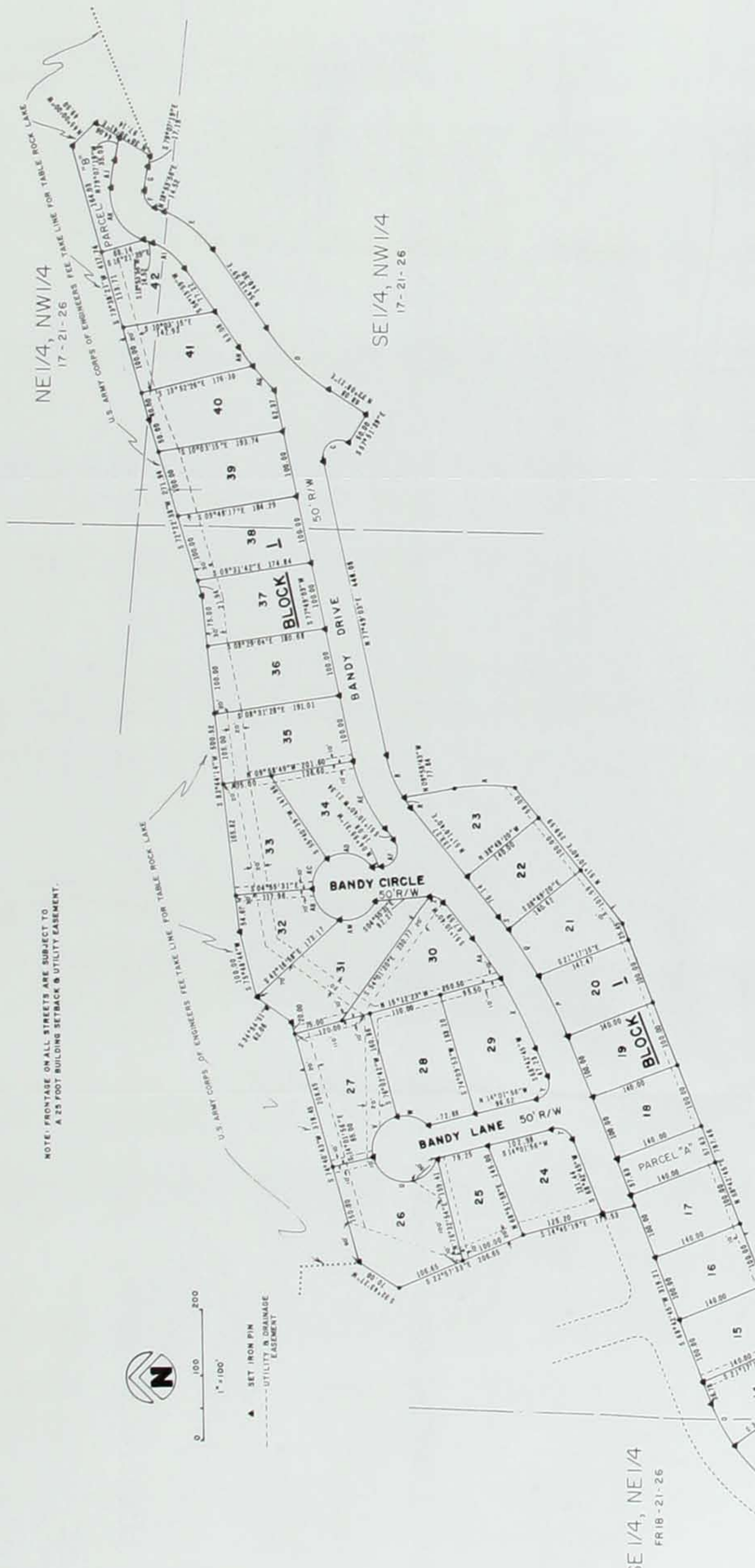


Table with columns: RADIIUS, ARC, LCT ID, CHORD BEARING, CHORD, DELTA, TAN. It lists survey data for various points and curves.

Legal Description  
A part of the East one-half of the Fractional Section 13 and a part of the West one-half of Section 17, all in Township 21 North, Range 26 West, Carroll County, Arkansas, described as:

NOTE: FRONTAGE ON ALL STREETS ARE SUBJECT TO A 25 FOOT BUILDING SETBACK & UTILITY EASEMENT.



NOTE: FRONTAGE ON ALL STREETS ARE SUBJECT TO A 25 FOOT BUILDING SETBACK & UTILITY EASEMENT.  
APPROXIMATE ACRES: FRACTIONAL SECTION 13, T-21-N, R-26-W  
SE 1/4, NE 1/4 = 0.93 ACRES  
NE 1/4, SE 1/4 = 0.60 ACRES  
SECTION 17, T-21-N, R-26-W  
NW 1/4, SW 1/4 = 2.96 ACRES  
SW 1/4, NW 1/4 = 11.88 ACRES  
SE 1/4, NW 1/4 = 2.07 ACRES  
NE 1/4, NW 1/4 = 0.60 ACRES