

UNIT 111

UNIT 111

ALL LOTS IN UNIT 111 ARE ZONED R-1 -- SINGLE FAMILY RESIDENTIAL.

For information concerning the construction, operation and maintenance of the improvements within this Plat, we refer you to your Federal Property Report.

NOTE: NOT A TRUE COPY OF THE RECORDED MAP. For detailed information, see plat as recorded in the Western District of Carroll County, Arkansas.

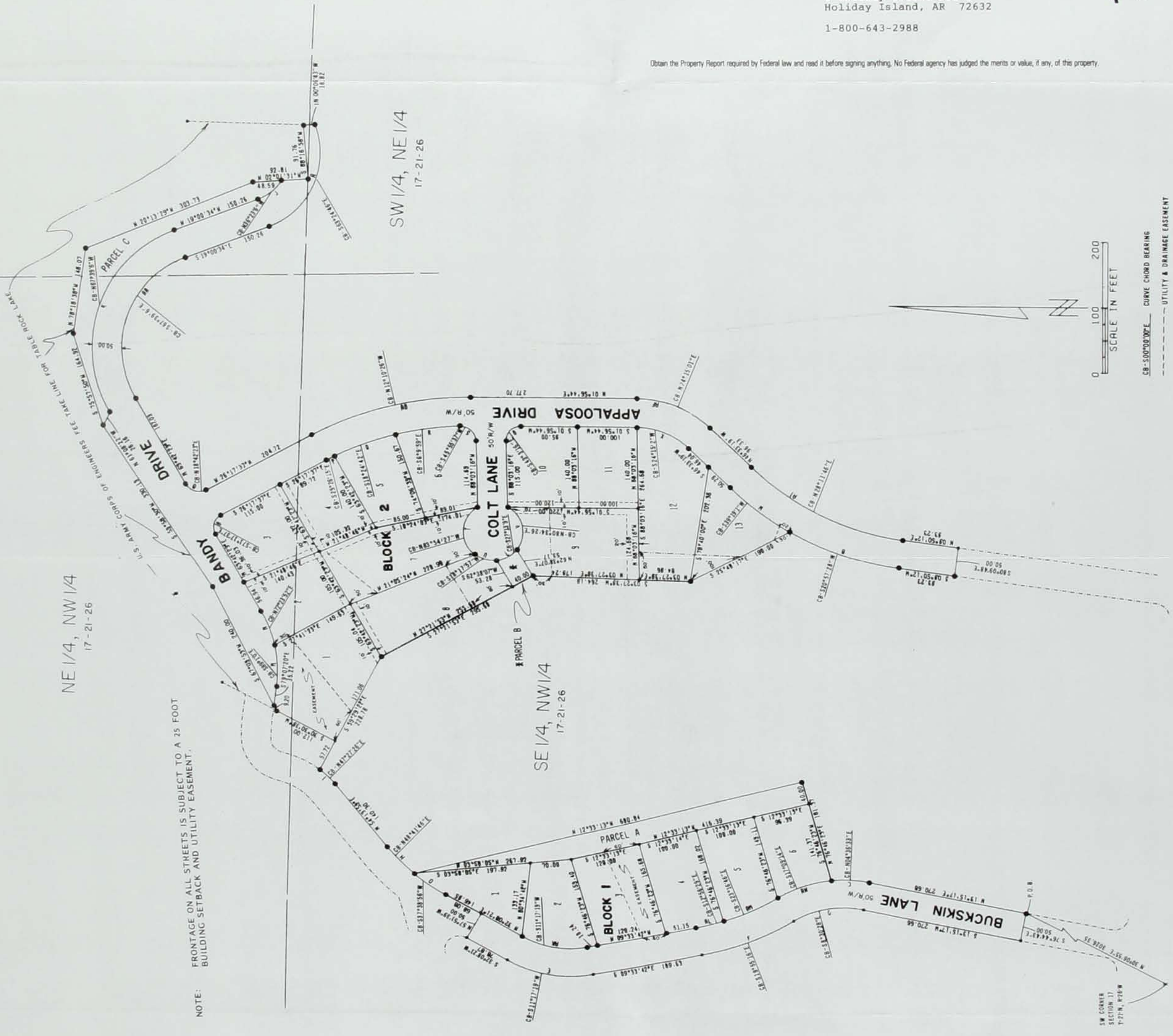


HOLIDAY ISLAND  
DEVELOPMENT CORPORATION  
2 Holiday Island Drive  
Holiday Island, AR 72632  
1-800-643-2988

Obtain the Property Report required by Federal law and read it before signing anything. No Federal agency has judged the merits or value, if any, of this property.



PRINTED IN U.S.A.



- CURVE CHORD BEARING
- UTILITY & DRAINAGE EASEMENT
- SET IRON PIN
- BUILDING SETBACK LINE

NE 1/4, NW 1/4  
17-21-26

SW 1/4, NE 1/4  
17-21-26

SE 1/4, NW 1/4  
17-21-26

NOTE: FRONTAGE ON ALL STREETS IS SUBJECT TO A 25 FOOT BUILDING SETBACK AND UTILITY EASEMENT.

APPROXIMATE ACRES: SECTION 17, T-21-N, R-26-W

NE 1/4, NW 1/4	=	2.01 ACRES
SE 1/4, NW 1/4	=	10.99 ACRES
NW 1/4, NE 1/4	=	0.66 ACRES
SW 1/4, NE 1/4	=	0.04 ACRES

**LEGAL DESCRIPTION**

A PART OF THE EASE, 111, 112, 113, 114, 115, 116, 117, 118, 119, 120, 121, 122, 123, 124, 125, 126, 127, 128, 129, 130, 131, 132, 133, 134, 135, 136, 137, 138, 139, 140, 141, 142, 143, 144, 145, 146, 147, 148, 149, 150, 151, 152, 153, 154, 155, 156, 157, 158, 159, 160, 161, 162, 163, 164, 165, 166, 167, 168, 169, 170, 171, 172, 173, 174, 175, 176, 177, 178, 179, 180, 181, 182, 183, 184, 185, 186, 187, 188, 189, 190, 191, 192, 193, 194, 195, 196, 197, 198, 199, 200, 201, 202, 203, 204, 205, 206, 207, 208, 209, 210, 211, 212, 213, 214, 215, 216, 217, 218, 219, 220, 221, 222, 223, 224, 225, 226, 227, 228, 229, 230, 231, 232, 233, 234, 235, 236, 237, 238, 239, 240, 241, 242, 243, 244, 245, 246, 247, 248, 249, 250, 251, 252, 253, 254, 255, 256, 257, 258, 259, 260, 261, 262, 263, 264, 265, 266, 267, 268, 269, 270, 271, 272, 273, 274, 275, 276, 277, 278, 279, 280, 281, 282, 283, 284, 285, 286, 287, 288, 289, 290, 291, 292, 293, 294, 295, 296, 297, 298, 299, 300, 301, 302, 303, 304, 305, 306, 307, 308, 309, 310, 311, 312, 313, 314, 315, 316, 317, 318, 319, 320, 321, 322, 323, 324, 325, 326, 327, 328, 329, 330, 331, 332, 333, 334, 335, 336, 337, 338, 339, 340, 341, 342, 343, 344, 345, 346, 347, 348, 349, 350, 351, 352, 353, 354, 355, 356, 357, 358, 359, 360, 361, 362, 363, 364, 365, 366, 367, 368, 369, 370, 371, 372, 373, 374, 375, 376, 377, 378, 379, 380, 381, 382, 383, 384, 385, 386, 387, 388, 389, 390, 391, 392, 393, 394, 395, 396, 397, 398, 399, 400, 401, 402, 403, 404, 405, 406, 407, 408, 409, 410, 411, 412, 413, 414, 415, 416, 417, 418, 419, 420, 421, 422, 423, 424, 425, 426, 427, 428, 429, 430, 431, 432, 433, 434, 435, 436, 437, 438, 439, 440, 441, 442, 443, 444, 445, 446, 447, 448, 449, 450, 451, 452, 453, 454, 455, 456, 457, 458, 459, 460, 461, 462, 463, 464, 465, 466, 467, 468, 469, 470, 471, 472, 473, 474, 475, 476, 477, 478, 479, 480, 481, 482, 483, 484, 485, 486, 487, 488, 489, 490, 491, 492, 493, 494, 495, 496, 497, 498, 499, 500, 501, 502, 503, 504, 505, 506, 507, 508, 509, 510, 511, 512, 513, 514, 515, 516, 517, 518, 519, 520, 521, 522, 523, 524, 525, 526, 527, 528, 529, 530, 531, 532, 533, 534, 535, 536, 537, 538, 539, 540, 541, 542, 543, 544, 545, 546, 547, 548, 549, 550, 551, 552, 553, 554, 555, 556, 557, 558, 559, 560, 561, 562, 563, 564, 565, 566, 567, 568, 569, 570, 571, 572, 573, 574, 575, 576, 577, 578, 579, 580, 581, 582, 583, 584, 585, 586, 587, 588, 589, 590, 591, 592, 593, 594, 595, 596, 597, 598, 599, 600, 601, 602, 603, 604, 605, 606, 607, 608, 609, 610, 611, 612, 613, 614, 615, 616, 617, 618, 619, 620, 621, 622, 623, 624, 625, 626, 627, 628, 629, 630, 631, 632, 633, 634, 635, 636, 637, 638, 639, 640, 641, 642, 643, 644, 645, 646, 647, 648, 649, 650, 651, 652, 653, 654, 655, 656, 657, 658, 659, 660, 661, 662, 663, 664, 665, 666, 667, 668, 669, 670, 671, 672, 673, 674, 675, 676, 677, 678, 679, 680, 681, 682, 683, 684, 685, 686, 687, 688, 689, 690, 691, 692, 693, 694, 695, 696, 697, 698, 699, 700, 701, 702, 703, 704, 705, 706, 707, 708, 709, 710, 711, 712, 713, 714, 715, 716, 717, 718, 719, 720, 721, 722, 723, 724, 725, 726, 727, 728, 729, 730, 731, 732, 733, 734, 735, 736, 737, 738, 739, 740, 741, 742, 743, 744, 745, 746, 747, 748, 749, 750, 751, 752, 753, 754, 755, 756, 757, 758, 759, 760, 761, 762, 763, 764, 765, 766, 767, 768, 769, 770, 771, 772, 773, 774, 775, 776, 777, 778, 779, 780, 781, 782, 783, 784, 785, 786, 787, 788, 789, 790, 791, 792, 793, 794, 795, 796, 797, 798, 799, 800, 801, 802, 803, 804, 805, 806, 807, 808, 809, 810, 811, 812, 813, 814, 815, 816, 817, 818, 819, 820, 821, 822, 823, 824, 825, 826, 827, 828, 829, 830, 831, 832, 833, 834, 835, 836, 837, 838, 839, 840, 841, 842, 843, 844, 845, 846, 847, 848, 849, 850, 851, 852, 853, 854, 855, 856, 857, 858, 859, 860, 861, 862, 863, 864, 865, 866, 867, 868, 869, 870, 871, 872, 873, 874, 875, 876, 877, 878, 879, 880, 881, 882, 883, 884, 885, 886, 887, 888, 889, 890, 891, 892, 893, 894, 895, 896, 897, 898, 899, 900, 901, 902, 903, 904, 905, 906, 907, 908, 909, 910, 911, 912, 913, 914, 915, 916, 917, 918, 919, 920, 921, 922, 923, 924, 925, 926, 927, 928, 929, 930, 931, 932, 933, 934, 935, 936, 937, 938, 939, 940, 941, 942, 943, 944, 945, 946, 947, 948, 949, 950, 951, 952, 953, 954, 955, 956, 957, 958, 959, 960, 961, 962, 963, 964, 965, 966, 967, 968, 969, 970, 971, 972, 973, 974, 975, 976, 977, 978, 979, 980, 981, 982, 983, 984, 985, 986, 987, 988, 989, 990, 991, 992, 993, 994, 995, 996, 997, 998, 999, 1000.

TO	PARCELS	DECL.	BEAR.	DIST.	CHORD	BEARING	DIST.
A	10	108.97	88°48'28"	212.20	131.07	114.14	
B	11	117.88	171°37'28"	64.74	64.00	31.57	
C	12	158.89	11°20'17"	64.78	64.68	31.43	
D	13	207.74	41°42'03"	151.20	147.88	79.17	
E	14	463.17	10°42'28"	168.85	167.57	85.38	
F	15	356.85	11°24'28"	151.10	151.00	37.65	
G	16	145.58	13°23'04"	35.36	35.78	17.76	
H	17	466.97	24°45'03"	52.75	51.94	27.21	
I	18	428.58	97°17'02"	377.94	376.15	152.85	
J	19	1029.81	15°27'18"	74.46	74.10	36.60	
K	20	75.00	30°00'00"	39.27	35.36	35.00	
L	21	511.88	1°42'41"	15.78	15.78	7.64	
M	22	311.68	17°28'37"	108.20	108.20	54.25	
N	23	75.00	30°00'00"	40.16	35.36	25.31	
O	24	50.00	111°42'29"	37.48	37.26	20.14	
P	25	350.00	37°15'33"	84.87	75.04	56.79	
Q	26	121.78	44°28'34"	54.41	57.04	43.74	
R	27	176.58	37°17'03"	230.04	258.09	136.05	
S	28	361.68	28°14'31"	276.93	274.04	141.29	
T	29	171.76	44°28'34"	133.34	130.00	70.76	
U	30	448.08	35°43'05"	236.86	230.99	148.03	
V	31	157.74	41°42'03"	114.80	117.29	60.08	
W	32	417.15	13°23'04"	87.30	87.51	41.51	
X	33	212.86	28°14'31"	97.46	96.61	45.60	