

THIS UNIT IS INDICATED ON THE MASTER PLAN BELOW BY THE SHADED AREA.

IN UNIT 116 ALL LOTS ARE ZONED R-1 - SINGLE FAMILY RESIDENTIAL.

For information concerning the construction, operation and maintenance of the improvements within this Plat, we refer you to your Federal Property Report.

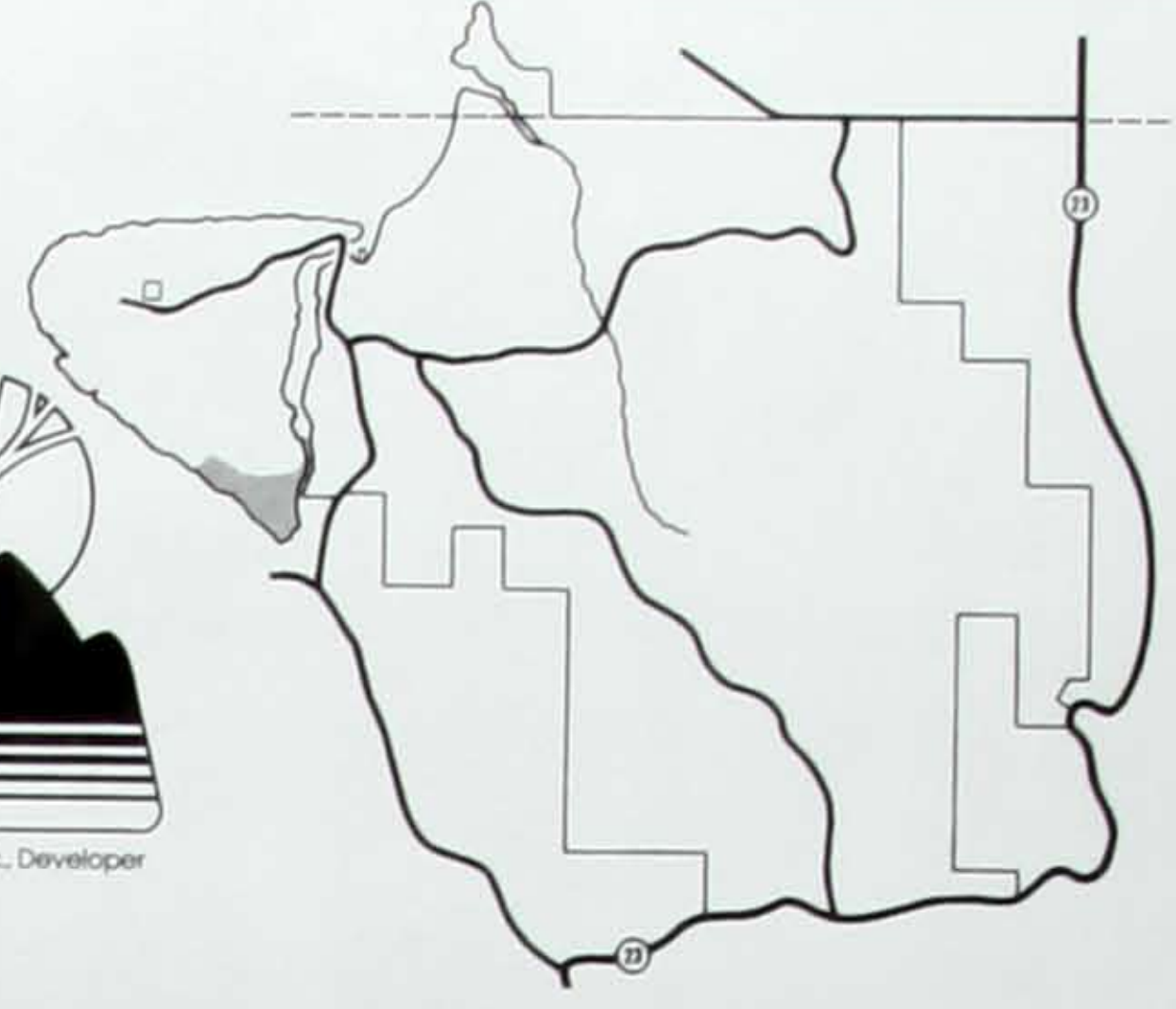
NOTE: NOT A TRUE COPY OF THE RECORDED MAP. For detailed information, see plat as recorded in the Western District of Carroll County, Arkansas.

UNIT 116

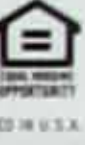
Holiday Island



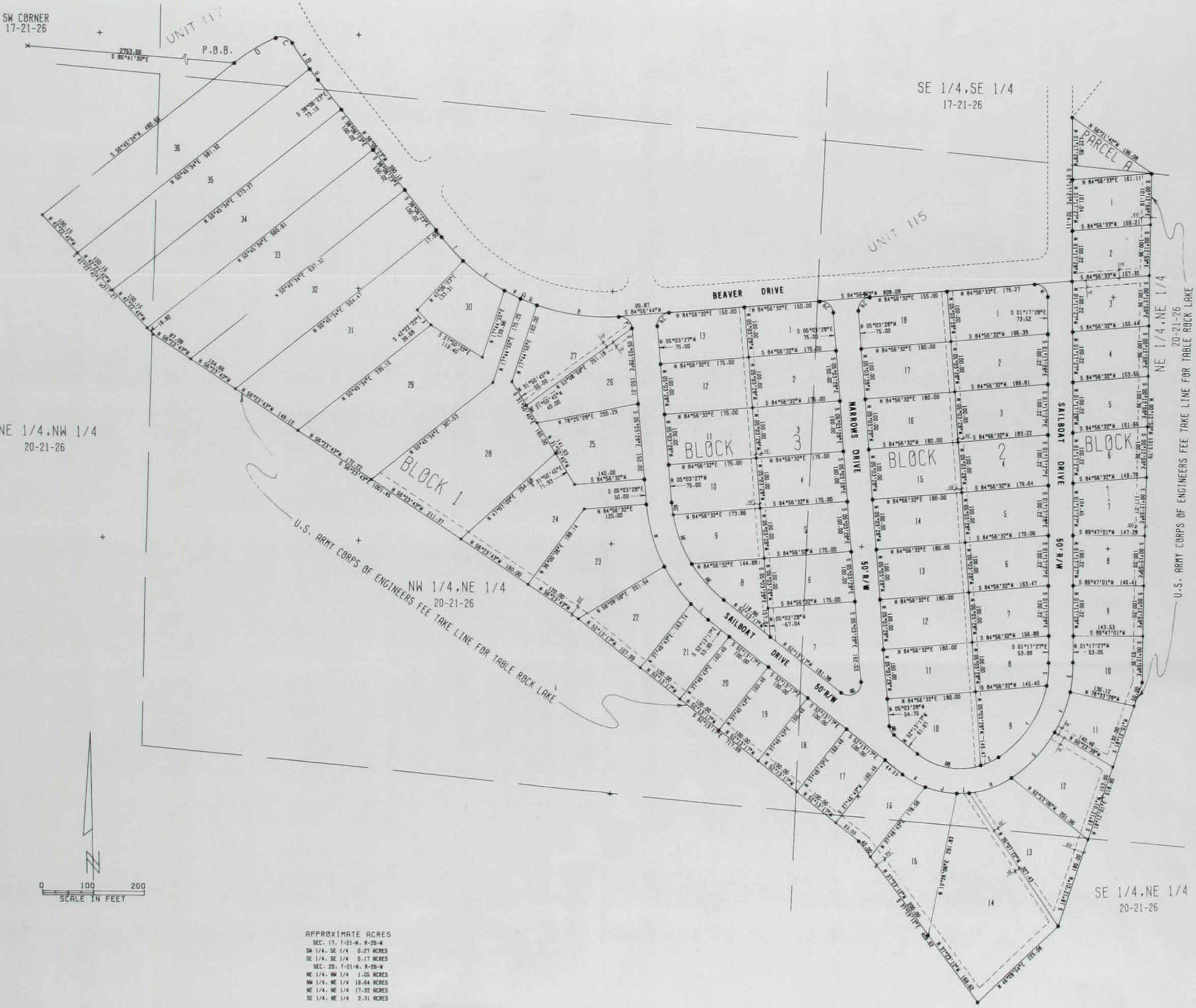
MCO Properties Inc., Developer



Obtain the Property Report required by Federal law and read it before signing anything. No Federal agency has judged the merits or value, if any, of this property.



PRINTED IN U.S.A.



SW CORNER
17-21-26

UNIT 117

P.O.B.

SE 1/4, SE 1/4
17-21-26

UNIT 115

NE 1/4, NW 1/4
20-21-26

BLOCK 1

NW 1/4, NE 1/4
20-21-26

U.S. ARMY CORPS OF ENGINEERS FEE TAKE LINE FOR TABLE ROCK LAKE

BEAVER DRIVE

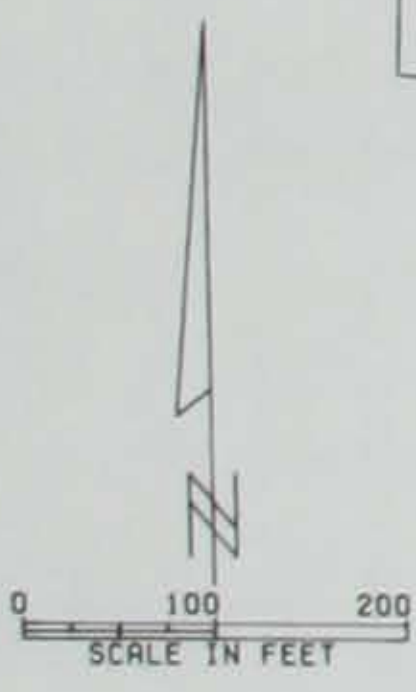
NARROWS DRIVE

SAILBOAT DRIVE

NE 1/4, NE 1/4
20-21-26

U.S. ARMY CORPS OF ENGINEERS FEE TAKE LINE FOR TABLE ROCK LAKE

SE 1/4, NE 1/4
20-21-26



APPROXIMATE ACRES

SEC. 17, T-21-N, R-26-W	
SW 1/4, SE 1/4	0.27 ACRES
SE 1/4, SE 1/4	0.17 ACRES
SEC. 20, T-21-N, R-26-W	
NE 1/4, NW 1/4	1.05 ACRES
NW 1/4, NE 1/4	19.64 ACRES
NE 1/4, NE 1/4	17.32 ACRES
SE 1/4, NE 1/4	2.31 ACRES