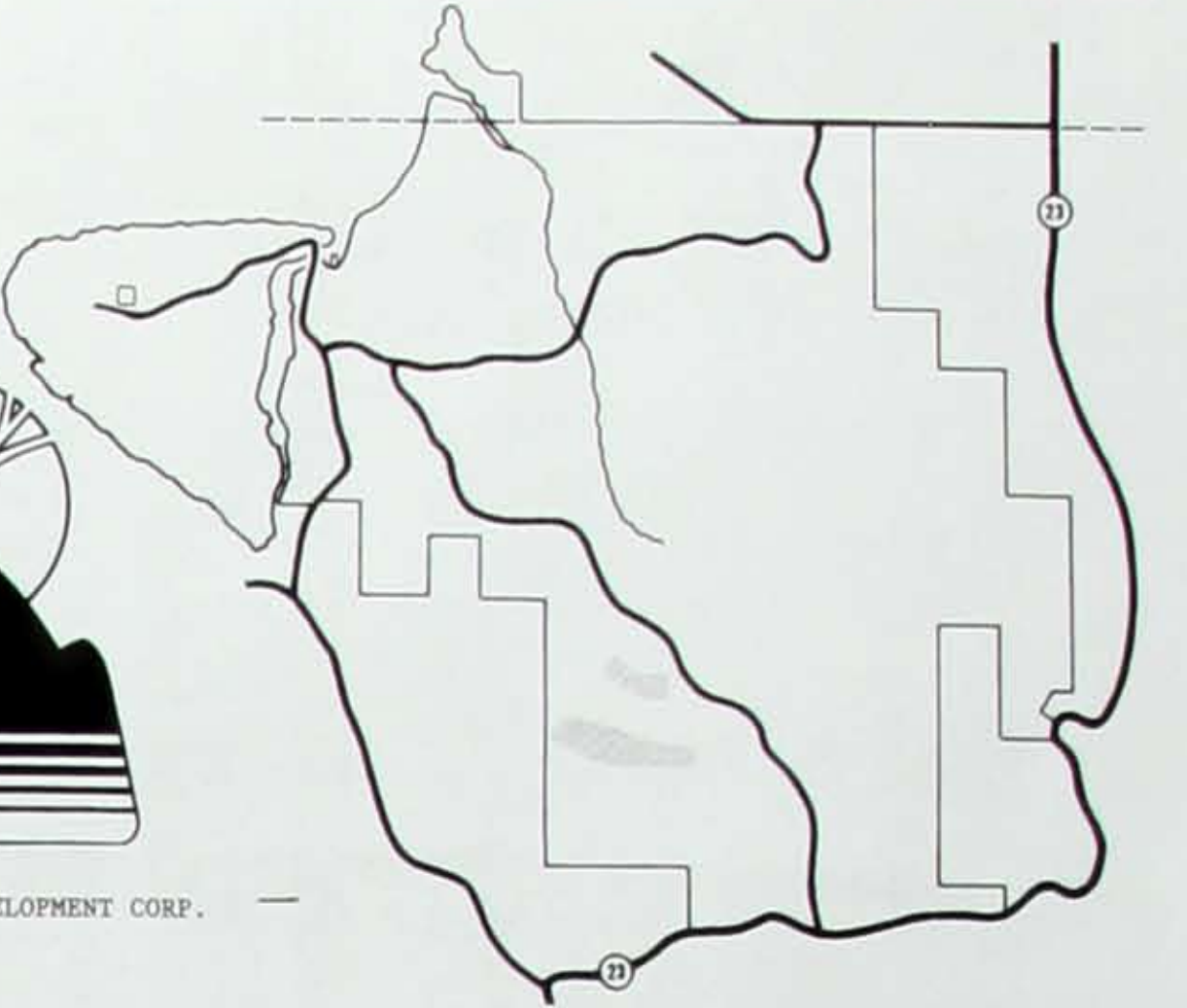


UNIT 13

Holiday Island



HOLIDAY ISLAND DEVELOPMENT CORP.



IN UNIT 13 ALL LOTS ARE ZONED R-1 SINGLE FAMILY RESIDENTIAL.

For information concerning the construction, operation and maintenance of the improvements within this Plat, we refer you to your Federal Property Report.

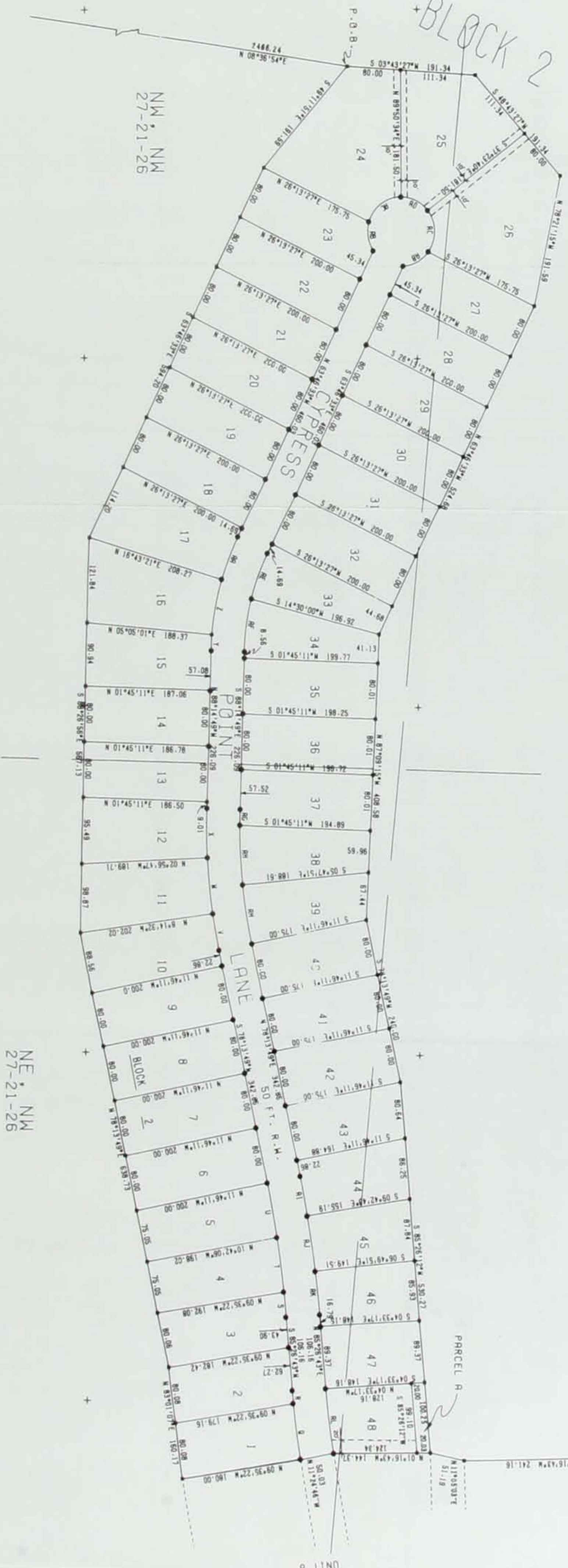
Note: NOT A TRUE COPY OF THE RECORDED MAP. For detailed information, see plat as recorded in the Western District of Carroll County, Arkansas.

8/86

Obtain the Property Report required by Federal law and read it before signing anything. No Federal agency has judged the merits or value, if any, of this property.



PRINTED IN U.S.A.



NM, NM
27-21-26

SM, SM
22-21-26

SE, SM
22-21-26

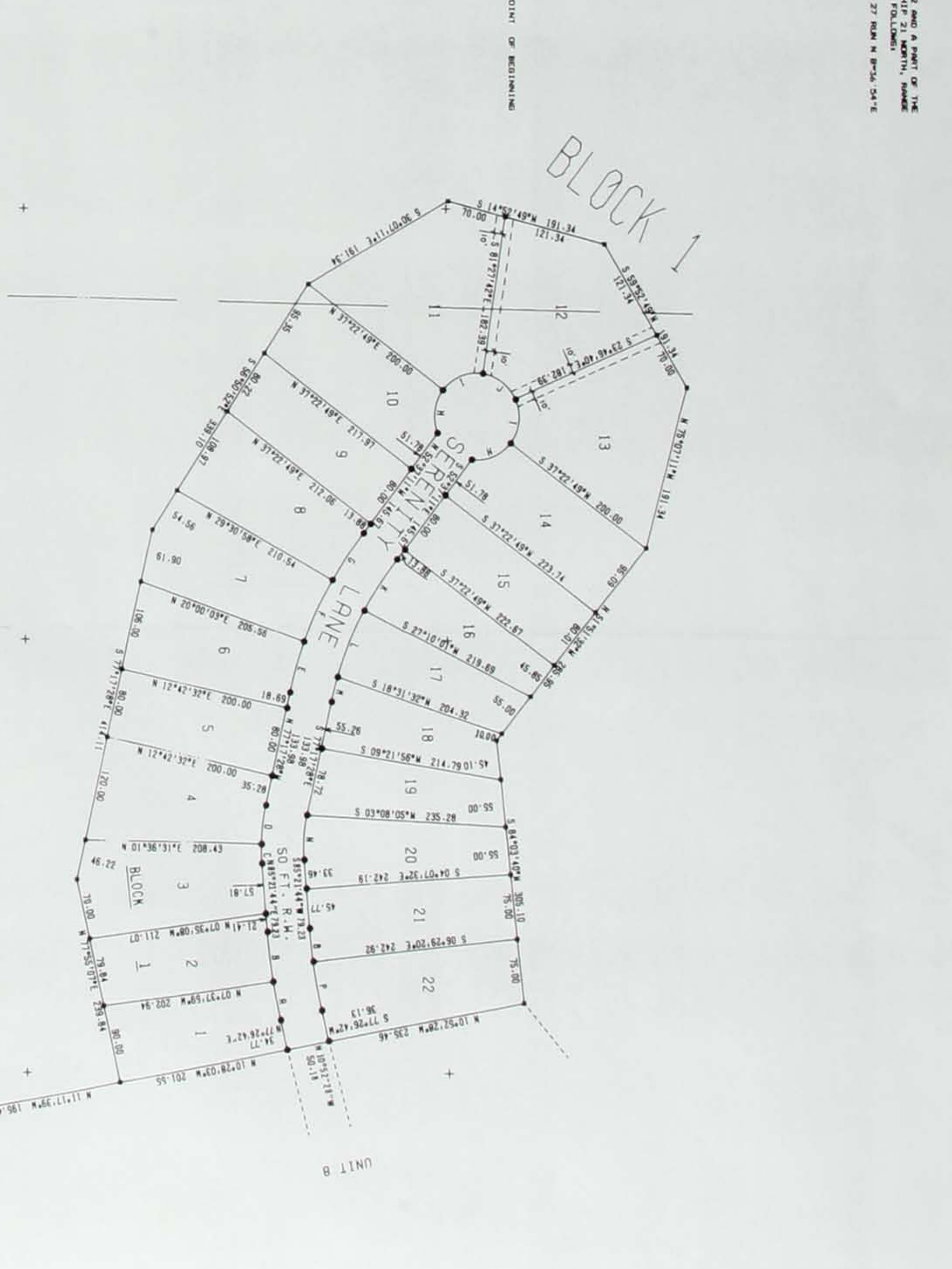
NE, NM
27-21-26

NOTE: ENCUMBRANCES ON ALL STREETS ARE SUBJECT TO A 10 FOOT BUILDING SETBACK AND UTILITY EASEMENT.

APPROXIMATE ACRES	TRACT NO.	SECTION	TAKE-UP
1.4	1	27-21-26	8.8
1.4	2	27-21-26	8.8
1.4	3	22-21-26	11.2
1.4	4	22-21-26	11.2
1.4	5	27-21-26	8.8
1.4	6	27-21-26	8.8
1.4	7	22-21-26	11.2
1.4	8	22-21-26	11.2
1.4	9	27-21-26	8.8
1.4	10	27-21-26	8.8
1.4	11	22-21-26	11.2
1.4	12	22-21-26	11.2
1.4	13	27-21-26	8.8
1.4	14	27-21-26	8.8
1.4	15	22-21-26	11.2
1.4	16	22-21-26	11.2
1.4	17	27-21-26	8.8
1.4	18	27-21-26	8.8
1.4	19	22-21-26	11.2
1.4	20	22-21-26	11.2
1.4	21	27-21-26	8.8
1.4	22	27-21-26	8.8
1.4	23	22-21-26	11.2
1.4	24	22-21-26	11.2
1.4	25	27-21-26	8.8
1.4	26	27-21-26	8.8
1.4	27	22-21-26	11.2
1.4	28	22-21-26	11.2
1.4	29	27-21-26	8.8
1.4	30	27-21-26	8.8
1.4	31	22-21-26	11.2
1.4	32	22-21-26	11.2
1.4	33	27-21-26	8.8
1.4	34	27-21-26	8.8
1.4	35	22-21-26	11.2
1.4	36	22-21-26	11.2
1.4	37	27-21-26	8.8
1.4	38	27-21-26	8.8
1.4	39	22-21-26	11.2
1.4	40	22-21-26	11.2
1.4	41	27-21-26	8.8
1.4	42	27-21-26	8.8
1.4	43	22-21-26	11.2
1.4	44	22-21-26	11.2
1.4	45	27-21-26	8.8
1.4	46	27-21-26	8.8
1.4	47	22-21-26	11.2
1.4	48	22-21-26	11.2

LEGAL DESCRIPTION

A PART OF THE S 1/2 OF THE SW 1/4 OF SECTION 22 AND A PART OF THE N 1/2 OF THE SW 1/4 OF SECTION 27 ALL IN TOWNSHIP 21 NORTH, RANGE 26 WEST, COUNTY OF CARROLL, ARKANSAS. (S 1/2 OF SECTION 22, 27, 28, 29, 30, 31, 32, 33, 34, 35, 36, 37, 38, 39, 40, 41, 42, 43, 44, 45, 46, 47, 48). (S 1/2 OF SECTION 27, 28, 29, 30, 31, 32, 33, 34, 35, 36, 37, 38, 39, 40, 41, 42, 43, 44, 45, 46, 47, 48). (S 1/2 OF SECTION 28, 29, 30, 31, 32, 33, 34, 35, 36, 37, 38, 39, 40, 41, 42, 43, 44, 45, 46, 47, 48). (S 1/2 OF SECTION 29, 30, 31, 32, 33, 34, 35, 36, 37, 38, 39, 40, 41, 42, 43, 44, 45, 46, 47, 48). (S 1/2 OF SECTION 30, 31, 32, 33, 34, 35, 36, 37, 38, 39, 40, 41, 42, 43, 44, 45, 46, 47, 48). (S 1/2 OF SECTION 31, 32, 33, 34, 35, 36, 37, 38, 39, 40, 41, 42, 43, 44, 45, 46, 47, 48). (S 1/2 OF SECTION 32, 33, 34, 35, 36, 37, 38, 39, 40, 41, 42, 43, 44, 45, 46, 47, 48). (S 1/2 OF SECTION 33, 34, 35, 36, 37, 38, 39, 40, 41, 42, 43, 44, 45, 46, 47, 48). (S 1/2 OF SECTION 34, 35, 36, 37, 38, 39, 40, 41, 42, 43, 44, 45, 46, 47, 48). (S 1/2 OF SECTION 35, 36, 37, 38, 39, 40, 41, 42, 43, 44, 45, 46, 47, 48). (S 1/2 OF SECTION 36, 37, 38, 39, 40, 41, 42, 43, 44, 45, 46, 47, 48). (S 1/2 OF SECTION 37, 38, 39, 40, 41, 42, 43, 44, 45, 46, 47, 48). (S 1/2 OF SECTION 38, 39, 40, 41, 42, 43, 44, 45, 46, 47, 48). (S 1/2 OF SECTION 39, 40, 41, 42, 43, 44, 45, 46, 47, 48). (S 1/2 OF SECTION 40, 41, 42, 43, 44, 45, 46, 47, 48). (S 1/2 OF SECTION 41, 42, 43, 44, 45, 46, 47, 48). (S 1/2 OF SECTION 42, 43, 44, 45, 46, 47, 48). (S 1/2 OF SECTION 43, 44, 45, 46, 47, 48). (S 1/2 OF SECTION 44, 45, 46, 47, 48). (S 1/2 OF SECTION 45, 46, 47, 48). (S 1/2 OF SECTION 46, 47, 48). (S 1/2 OF SECTION 47, 48). (S 1/2 OF SECTION 48).



BLOCK 1

LANE

BLOCK

UNIT B